

TURBO

<http://www.turbok.com>



Manufacturing

Distribution

Finance



Turbo Soft

Corporate Background ●

Turbo Soft Computer (HK) Ltd. is a software corporation headquartered in Hong Kong SAR, China. Established in 1988 and is mainly dedicated to provide a high level of computerized services to Hong Kong and China companies so as to enhance the competitive power. TURBO partnership with Microsoft, Sybase, Asia OnLine, Asian Solutions Center & Hong Kong Productivity Council as for business & technology commitment. We have independent training center and over 30 system consultants to design ERP, MRP, Trading, Finance, e-Commerce & m-Commerce application systems for all industries and provide professional advice on computerization in your company.

TURBO ERP Software had five application suites designed specifically for the needs of small to midsize manufacturers and distributors working to grow their businesses. These completely integrated suites provide powerful functionality in five major areas: **Manufacturing, Distribution/Trading, Finance, Servicing and Rental**. Recently, more than 2000 companies have been successfully computerized by our professional and expertise assistance and supporting.

Benefits of Enterprise Resource Planning (ERP)

To achieve success in today's business climate you must do more than provide high quality low cost products to customers when and how they want them. Customers and suppliers require fully integrated information - throughout the supply chain or value chain. You must integrate your organization so completely that executive decisions are implemented effortlessly.

ERP projects can sometimes cost huge amount of money. Nevertheless, the payback is high... ERP systems can provide you the reliable, integrated data infrastructure you need to more easily access corporate data and, consequently, manage you business more effectively. You should plan your ERP implementations carefully and devote adequate resources to the projects to gain the most benefits from your investments and ensure the systems are installed within your planned schedule and budget.

Specifically, ERP Software helps you to:

Schedule Production and Plan Purchases

- Schedule sales and forecasted demands into a MPS.
- Raise manufacturing orders & work orders.
- Recommends work orders and purchase orders.
- Facilitate cost effective buying practices.
- Used for capacity analysis - calculates load on machines and workforce, compared to capacity.
- Reschedule work or purchase orders.
- Change or cancel order quantities.
- On schedule complete order and reduce extra cost.
- Improved Cash Flow

Monitor Inventories

- Take physical inventory.
- Have material ready when required.
- Calculate material shortages.
- Reveal production and purchase discrepancies.
- Display Inactive or obsolete inventory.
- Eliminate surplus inventory.



快

達電腦(香港)有限公司是一間以香港及中國為基地的軟件發展商，自1988年成立至今，一直致力為中港兩地公司提供高質素的軟件電腦化服務，以增強客戶之競爭力。並且快達(Turbo)已與微軟(Microsoft)、賽貝斯(Sybase)、亞洲資訊網絡(Asia On Line)、亞洲方案中心(Asian Solutions Center)及香港生產力促進局(Hong Kong Productivity Council)成為技術上的合作伙伴。現於香港的辦公室分別設有每人一機的獨立培訓中心及擁有超過30多名的系統顧問工程師，分別為各行各業提供各類企業資源管理系統(ERP)、物料需求計劃(MRP)、貿易、財務、電貿及無線電貿等電腦化的專業意見。

快達企業資源管理系統(Turbo ERP)軟件分別針對五個主要的行業，分別為製造業、分銷商、貿易、財務、服務業及物業租務等企業。現今，憑著我們專業及豐富的經驗已成功為超過2000多間企業推行全面電腦化的系統。

企業資源管理系統(ERP)的優點

要在現今的商業社會達至成功，貴公司必須懂得在適當時間及以適當的方法為顧客提供他們所需的低成本高質素的商品，對於顧客及供應商應有完備的資訊—透過供應及價值鏈之關係，並綜合所有的資訊，重新整理貴公司的架構，這樣，在行政及決策上便可得到事半功倍的效果。

安裝企業資源管理系統(ERP)固然需要昂貴的費用，雖然如此，但其回報亦非常之高..... 在處理數據方面，企業資源管理系統(ERP)能夠提供一個可靠而且綜合性的資料架構，使你能隨時隨地取得準確業務上的資料，從而有效地管理業務。因此，貴公司必須從詳計議地選擇屬於你的企業

資源管理系統(ERP)，注入適當的資源，使到你的投資得到最豐厚的利益，並且確保你所選用的系統是在你的預算及進度之內。

企業資源管理系統(ERP)能協助貴公司處理以下核心的事務：

編排生產進度及購貨安排

- 預計銷售量與已評估需求量溶於主生產排程內
- 系統自動安排製造單及工作單
- 系統可自動提出建議安排工作單及購貨單
- 提供成本效益的購貨程序
- 產量規劃方案 - 能有效地計算工廠內機械與人力所能承受的負荷量，從而與生產量作出比較
- 系統可以跟進生產進度從而重新編排工作單及購貨單
- 更改或取消訂單數量
- 準時完成訂單，減少額外的成本
- 改善流動資金

監察存貨

- 取得實際存貨量
- 確保在需要時有充足的物料
- 計算物料短缺數量
- 顯示實際生產所需的物料與申購的差額
- 顯示滯銷或損壞的存貨
- 減少過剩的存貨



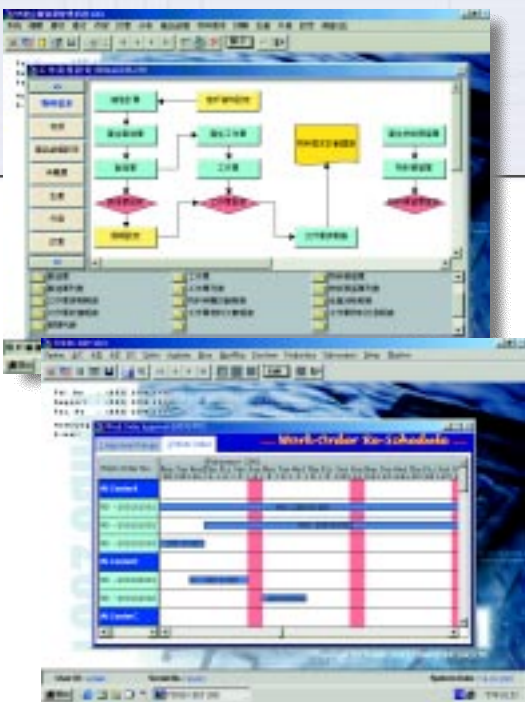
Why ERP with TURBO ●

We have over 13 years experience in designing and implementing ERP, MRP, Rental & Finance Solutions, So we understand your business model, market demands and production & distribution needs. TURBO ERP Software is a ready-made and highly customizable software package for production scheduling, inventory control, shop floor control, purchasing, and other functions that support consumer products, industrial products, electronics, toys, watches, jewellery, housewares, garments, shoes, OEM or ODM manufactory & distribution environment.

TURBO ERP Software places scheduled sales and forecasted demands into a Master Production Schedule. The system integrates the schedule with a bill of materials and considers lead times to create timely work orders. The system determines net purchase requirements from existing inventory and vendor lead times to match the production schedule and creates purchase orders. Reports and views are available at any point to help make accurate, up-to-date manufacturing decisions.

Powerful and User Friendly Features

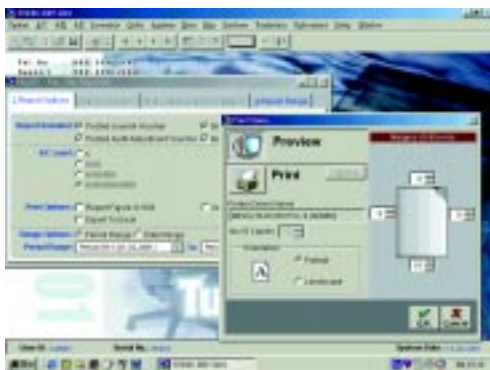
- Window multi-document interface(MDI), which allows data entry, enquiry or print reports can be accessed on the same screen.
- Support multiple company, currencies and user. Large field size: dollar amounts of up to 9,999,999,999.99, unit price & quantity up to 999,999,999.9999. Price & quantity decimal precision allows you to specify from 0 to 4 digits.
- Five levels analysis code enables user to analyze by accounts, departments, customers, vendors, inventories and job costing ... etc.
- Sophisticated password security and user authority level can be set up to 5 levels for view, add, edit, delete and print functions.
- Each user can be assigned a set of allowable pull-down menus and graphical work-flow diagram menus and options.
- Graphical work-flow diagram menu provides a graphical illustration of operation flow. Icon areas are defined so that a single mouse click will get you to the function you need.
- A system log of activity can be recorded for each user on the whole system.
- Bi-lingual(Eng/Chi), also supports traditional and simplified Chinese characters by Big-5 & GB code.
- Look-up table searching is easy, as you enter the leading characters of code or name, the system will locate the first record that matches your condition.
- Alerts you potential problems at start-up system, warning message can prompt the bank account negative balance, customer exceed credit limit, out of stock, materials purchase, order shipment and production schedule ...etc.
- Multiple document groups, each with its own prefix code, running number and number format.
- User memo, handling instructions and other comments are made up of multiple pages of free text and may be attached to master files and all transactions.
- More enquiries function support drill-down displayed detail analysis.
- More than 500 standard & user define management reports are included to give powerful analysis of your business.
- More sorting sequence & criteria of the reports can be defined during printing, and the report format will be adjusted accordingly.
- All documents and reports can be displayed on screen, printer, fax out, email or convert to Word, Excel and HTML format at any time.
- You may print your company logo on all documents & photos on price list.
- Remote data management, cross connect option provides data synchronization between Hong Kong and China.
- You can easily track orders and inventory information at any time and anywhere through Internet, Palm, Pocket PC & WAP Phone.



● 為何選用快達企業資源管理系統(Turbo ERP)

本公司在設計及研製企業資源管理系統(ERP)、物料需求計劃(MRP)、物業租務以及財務系統已有超過13年的豐富經驗，因此深知企業上的需要、市場上的需求、生產以及分銷上的各種難題。快達企業資源管理系統(Turbo ERP)是一套現成及可根據不同客戶的需要而作出修改的軟件系列，並且提供生產編排、存貨管理、生產中心管理、申購及其他功能等，系統特別針對各類消費產品、工業產品、電子、玩具、鐘錶、珠寶、家庭用品、成衣、鞋業、OEM或ODM製造商及貿易行業等。

快達企業資源管理系統(Turbo ERP)可把已預計銷售量與已評估需求量一同溶匯於主生產排程(MPS)內，把產品物料清單(BOM)配合上生產編排從而評估出每個工序之間的需時，再者，可根據現存的物料數量以及原料供應商的送貨時間，再配合生產編排來計出淨申購量及自動安排印出購買訂單，其各類分析報表及建議均能助你在生產上作出最新及準確的決定。



系統強大及易於使用

- 視窗多作業(MDI)操作介面，可同時在同一視窗內輸入數據、查詢或報表列印。
- 設有多公司、多種貨幣及多用戶系統，可容納大量字元：銀碼數值可大至9,999,999,999.99，單價及數量單位可大至999,999,999.9999，價格及數量之小數位可由0至4中選擇。
- 提供五層用戶自設分析編號，用戶可依會計科目、部門、客戶、供應商、存貨及工程成本等作分類分析。
- 精密的密碼保安功能，每一用戶功能權限可分為五個層次：查看、新增、修改、刪除及列印。
- 每一用戶可自定一系列"下拉式"菜單及"圖像工作流程表"菜單以供操作。
- "圖像工作流程表菜單"以圖像指示出各員工的每日操作流程，只要按一下滑鼠於圖像下便可進入你所需的功能中。
- 每一用戶每日使用之過程都記錄在電腦內以便管理層隨時查看。
- 可在運作途中隨時轉換中文或英文顯視，而中文字體更可分為繁體(Big-5)或簡體(GB)內碼供顯視列印。
- 提供快速檢視功能，用戶只需輸入相關編號或名稱的前數個字元，便可輕易搜尋到相關的資料。
- 當用戶每次開機，系統便自動檢查所有用戶自定的提示，例如銀行結餘出現負數、客戶信貸超出限額、存貨不足、物料短缺、船期將近及生產進度所出現的問題等。
- 每一種類交易文件，可獨立處理多組文件號碼及自定號碼格式。
- 提供多頁及無行數限制的備忘錄附設於主檔案及所有交易記錄上。
- 提供多種多層次式搜索查詢功能，用戶更可在每一單資料中再按入以查閱更詳細的分析。
- 超過500類標準及用戶自定的管理分析報表，協助貴公司作出有效的分析。
- 每一報表可有多種序列排列及關鍵選擇列印分析。
- 所有文件或報表皆可輸出至螢幕、印表機、傳真機、電郵及可轉換至Word、Excel、HTML等格式中。
- 所有文件可加入公司的商標及在價格單上加入相片的資料。
- 可處理中港兩地之數據傳送。
- 用戶可隨時隨地透過互聯網、掌上電腦(Palm & Pocket PC)及WAP流動電話處理訂單及存貨資料。



Why ERP with TURBO ●

Speed

TURBO ERP Software developed by Multi-Tier Client/Server Architecture, Microsoft VFP, C Language, ASP and Seagate Crystal Report. RDBMS can be matched with Microsoft Server & Sybase for smoothly operation. Even complex queries frequently execute many times faster than in other traditional systems. Faster access to data means faster turnaround to those who need to analyze and manipulate it.

Data Integrity and Security

The architecture of the RDBMS offers impressive checks and balances to protect data. Though a feature called Referential Integrity, a bad relationship between two pieces of data cannot be entered into the system. In addition, RDBMS enforces business rules at the database --not the application program logic level, which guards against data corruption. Built-in security features of RDBMS include privilege setting, which prevents access the confidential data.

Ease of Use and Simplicity

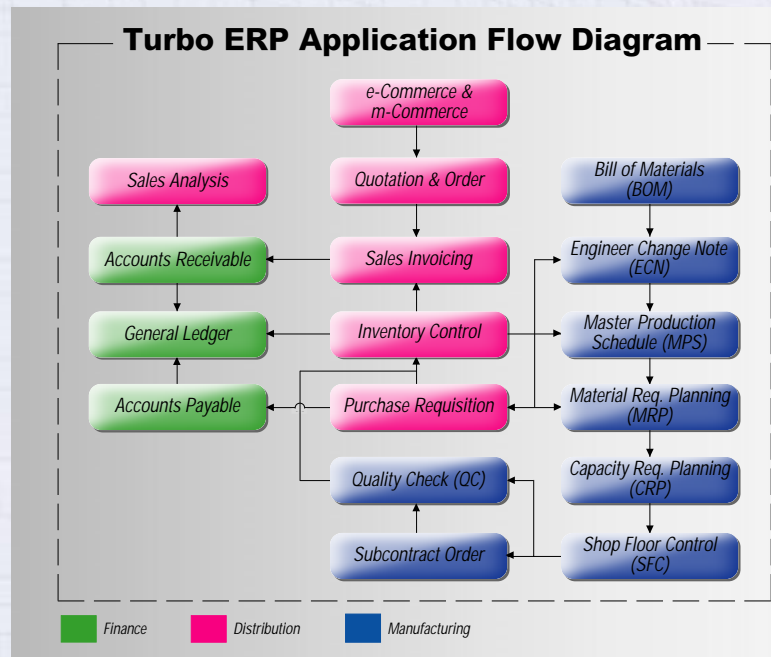
TURBO ERP Software is easy to learn and use because it retains the look feel of Microsoft-based tools, customers have been using for many years. Its intuitive graphical user interface cuts guesswork through consistent icons and user define work-flow diagram menu.

Modular & Flexibility

TURBO ERP Software is modular for flexibility to suit different budget and financial arrangement. You can start-up at a very low cost. Modular components allow incremental implementation and can be fully integrated for consistency and visibility across the enterprise.

Quality Services and Strong After-Sales Support

The full team of TURBO ensure a fast response and quality service to our clients even on-site. 90% of clients stays with us after first purchase and have developed a long-term relation with TURBO Software.



Our extracted client list is shown as below and all of trademark is belonging to the respective companies



● 為何選用快達企業資源管理系統(Turbo ERP)

速度

快達企業資源管理系統(Turbo ERP)由最新的技術,多層式主從架構(Multi-Tier Client/Server)、Microsoft VFP、C Language 及Seagate Crystal Report設計而成。關連式資料庫(RDBMS)可配合上Microsoft SQL Server或Sybase操作,即使用戶需要經常處理非常複雜的運算,均可較一般傳統的系統快捷可靠,更可在這訊息萬變的商業社會中快人一步地作出分析及改進。

數據的完整性及保安

關連式資料庫系統(RDBMS)能提供嚴緊及準確的數據偵查功能以保護資料的完整性,透過"資料關聯完整性(Referential Integrity)"的功能,使一些輸入錯誤的資料不能貯存於系統內,再者,在系統設計上,更加入了邏輯性的分析於數據庫內,並非一般應用程式所能控制,從而加強數據的完整性。另外,在數據庫內設有密碼的裝置及權限的保安系統,以防止熟悉電腦的人員隨時進入資料庫中盜取機密的資料。

簡單及易於使用

快達企業資源管理系統(Turbo ERP)是一套易於學習和使用的軟件,因設計上保留著一般客人使用多年的微軟視窗(Windows)的圖像化操作介面,用戶更可以透過自設的"圖像工作流程表"菜單以選擇所需要的操作功能。

模組化及易於擴展

快達企業資源管理系統(Turbo ERP)可以讓用戶因應不同的財政預算而選用不同的模組(Module),更可隨時增加所需的模組來配合企業上業務的擴充。

高質的售後服務支援

快達(Turbo)擁有一班專業的技術支援顧問,確保能為客人提供快捷及優質的服務,甚至提供專人上門視察問題,在我們合作的客戶中,約有90%均在第一次使用後,仍然繼續使用本公司的系統及維持良好的關係。



以下是我們部份合作之客戶,其公司商標註冊是屬於原有之公司所擁有





e-Commerce & m-Commerce - Pre-Sales Services

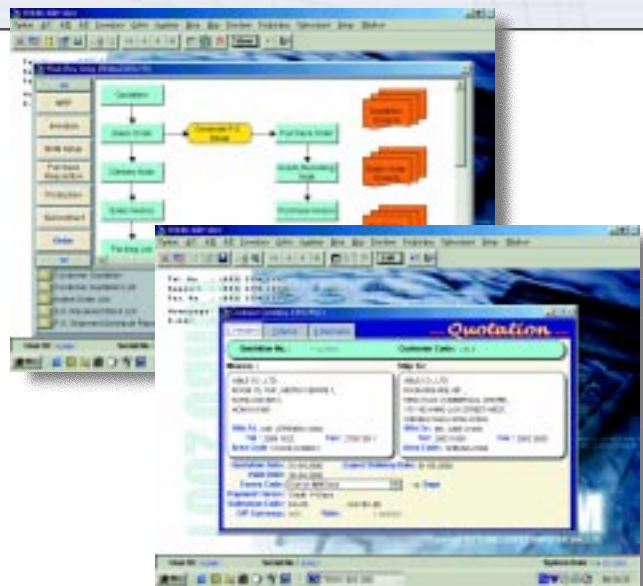
Obviously, e-commerce has had a huge impact on all facets of world of business. Other areas in which e-commerce can improve marketing include product promotion, new sales channels, direct savings, time-to-market(reduced cycle time), customer service, and brand or corporate image. The Internet will to shorten sales in business-to-business communications and commerce through accelerated: **e-Catalog, e-Quotation, e-Order, e-Enquiry**.

Your customers can come into your Web site through a browser, all information and picture of products can be retrieved from the TURBO ERP Software. You can specify which information should be shown on your web-pages. Customers can search for their products by item code, item description, brand, category ...etc. Once your customer click **[Add]** button, quotation or sales order will be generated and sent to your salesman for further sales follow-up. Your customers can also view orders on web, look at the shipment date, accounts receivable, statement and other information you want them to see.

In mobile e-commerce, all manufacturing, sales orders and inventory data now can be acquired directly from the **Palm, Pocket PC** and **WAP Phone**, also new data can be uploaded directly into **TURBO ERP** Software.

Sales Order Management

- Direct integration with web-site for e-Commerce or Palm, Pocket PC, WAP Phone for m-commerce.
- Customer Quotation entry and history analysis.
- Order data is automatically imported from more than one related quotations.
- Automatically generate multiple purchase orders from indent sales orders.
- Group products with same vendor into one purchase order automatically.
- Customer item code for sales order printing.
- Warning displayed in order entry for customer accounts exceeding the permitted credit limits and out of stock.
- On-line preview function provided for viewing updated quotation history, order history, on hand quantity of individual warehouse, on order quantity and reserved quantity.
- Automatic pricing incorporating customer/product or quantity discounts and special price, with optional manual override.
- Multi-currency order processing with currency and quantity-sensitive contact pricing.
- Order can allow input 3 levels stock item discount, moreover, 3 levels document discount and 5 levels miscellaneous charge on each order.
- Reserve stock during order entry.
- Handles multiple shipment date per order item.
- Back order, incomplete shipment order(Short Ship) and over shipment order can be handled.
- Multilevel drill down quotation/orders enquiry, which allows you to see all customer quotation history, outstanding sales order, order shipment and other information
- You can easily place orders on Palm or Pocket PC and send to office by mobile phone.





電子商貿及流動電子商貿 — 銷售前的服務

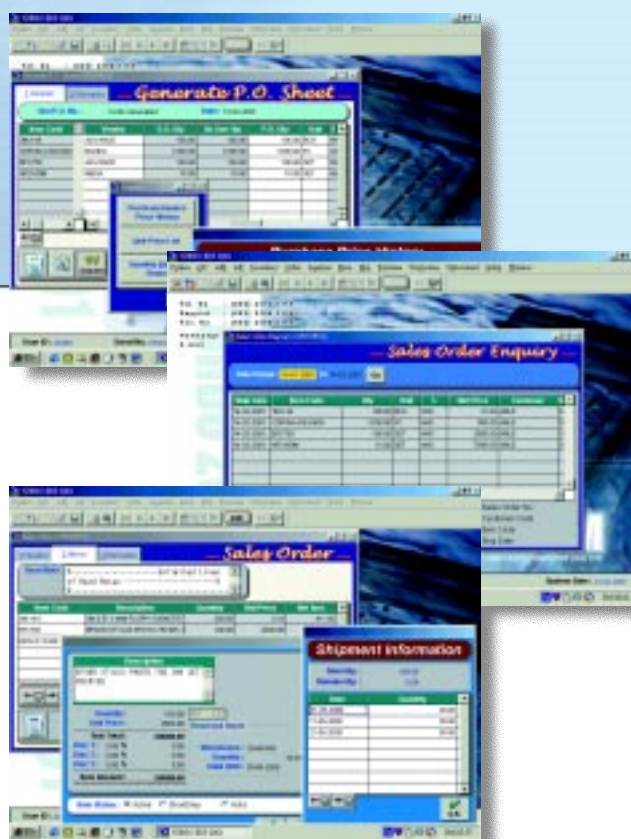
電子商貿已在全世界的商業社會上產生了巨大的影響力，它能增強企業在市場上的競爭力，其中包括市場推擴、發掘新的銷售渠道、減少開支、緊貼市場的需要、增強客戶服務及公司的形象。互聯網可以拉近企業與企業之間的溝通距離，用戶只需透過**電子商貿目錄(e-Catalog)**、**電子商貿報價(e-Quotation)**、**電子商貿訂購(e-Order)**、**電子商貿查詢(e-Enquiry)**，便可減省相方的銷售時間。

客戶可透過瀏覽器隨時進入貴公司的網頁，系統並自動從快達(Turbo)系統中選取出相關的客戶資料放於網頁上，客戶只需輸入有興趣之產品編號、產品名稱、品牌或類別等，便可尋找有關產品的資料，再者，客戶只需按一下[加入]鍵盤，系統便自動送出報價詢問或訂單到營業員手中，透過貴公司的網頁，客戶可查看自己的訂單狀況、貨運船期表、欠數、月結單及其他資料等。

在流動電子商貿，所有生產、訂單及存貨資料更可直接從掌上電腦(Palm & Pocket PC)及WAP手提電話中獲取或更新資料，並可將數據傳送回快達系統(Turbo ERP)中。

銷售訂單管理

- 訂單管理系統可透過電子商貿或無線商貿平台連成一整體，方便處理日常訂單。
- 可處理客戶的報價單及詳細歷史記錄。
- 可將多於一張的報價單的資料複製至訂單上。
- 提供外貿訂單貨品自動產生購貨訂單功能。
- 並把同一供應商的貨品自動地綜合成一張購貨訂單。
- 提供客戶產品編號及列印於訂單上。
- 當客戶超出信貸限額或存貨不足時，系統便發出警告。
- 報價或訂單過程中，用戶可即時查閱最新的報價資料、銷售歷史、各倉庫的數量、訂單及已預留數量的資料。
- 系統可自動根據預先設定的價目表(不同客戶產品、數量予不同價格及折扣)，選取合適的價格，並可在輸入過程中修改。
- 用戶可選用任何一種貨幣進行交易，並且根據不同幣值及數量作出自動價格更改。
- 提供三層產品累積折扣及整張訂單折扣功能，並同時可處理五項附加費用。
- 提供訂單預留產品的功能。
- 並可於每種產品附上貨運船期表以作參考。
- 可特別處理未完成或超出訂貨數量之訂單功能。
- 多層次式搜索訂單查詢功能，讓用戶更清楚地查閱客戶所有之報價單、訂單欠數、貨運船期及其他資料。
- 用戶更可透過掌上電腦(Palm & Pocket PC)或WAP手提電話處理訂單資料及傳送回公司中。



Distribution • Trading ●

Sales Invoicing

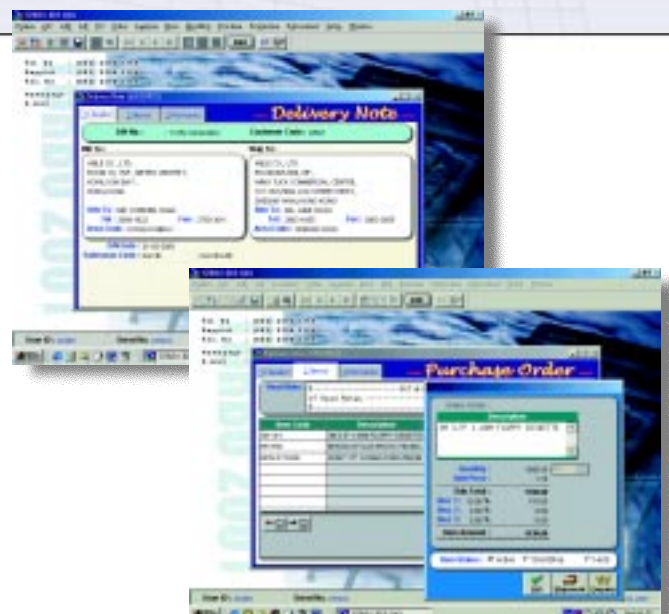
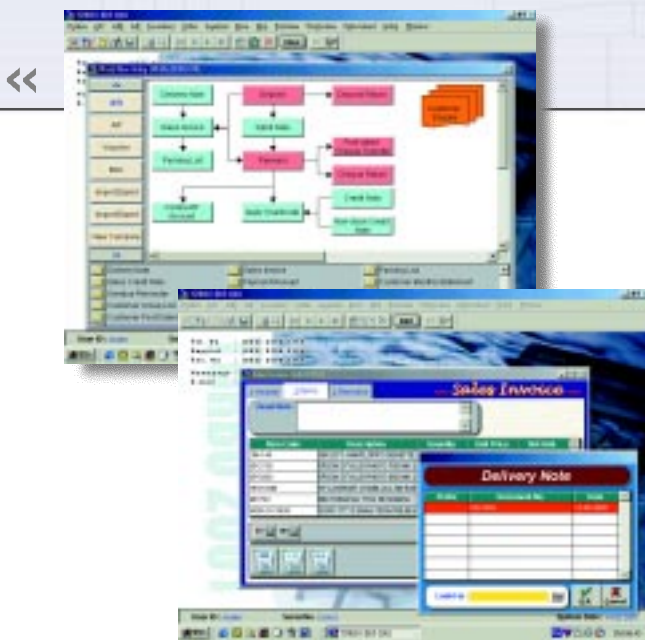
- Delivery Note/Invoice data is automatically imported from more than one related quotations or sales orders. Entering an invoice decreases the on-hand quantities in individual warehouse.
- Customer item code for sales invoice printing.
- Packing List data automatically import from sales invoice.
- Warning displayed in sales invoice entry for customer accounts exceeding the permitted credit limits and out of stock.
- Real-time and batch invoice posting optionally provided.
- On-line preview function provided for viewing updated quotation history, invoice history, on hand quantity of individual warehouse, on order quantity and reserved quantity.
- Multiple billing addresses, delivery addresses and contact persons during delivery note/invoice entry.
- Area code can be input in delivery note for grouping the same delivery area.
- Automatic pricing incorporating customer/product or quantity discounts and special price, with optional manual override.
- Multi-currency invoicing with currency and quantity-sensitive contact pricing.
- Invoice can allow input 3 levels stock item discount, moreover, 3 levels document discount and 5 levels miscellaneous charge on each invoice.
- Provides the statistics of salesmen turnover for calculating commission.
- Multilevel drill down customer/vendor enquiry, which allows you to see all outstanding invoices, invoice detail, payment detail, outstanding order, order shipment, quotation history and other information.

Purchase Order & Goods Receiving

- Automatically generate multiple purchase orders from indent sales orders.
- Group products with same vendor into one purchase order automatically.
- Goods Receiving Note/Purchase Invoice data is automatically imported from more than one related purchase orders. Entering an invoice increases the on-hand quantities in individual warehouse.
- Vendor item code for purchase order printing.
- On-line preview function provided for viewing updated order history, on hand quantity of individual warehouse and purchase order quantity.
- Automatic pricing incorporating vendor/product or quantity discounts and special price, with optional manual override.
- Multi-currency order processing with currency and quantity-sensitive contact pricing.
- Order & Invoice can allow input 3 levels stock item discount, moreover, 3 levels document discount and 5 levels miscellaneous charge on each order.
- Handles multiple shipment date per order item.
- On the enquiry screen, you can drill down to see all indent sales orders and purchase orders tracking, outstanding order, order shipment and other information.

Sales & Purchases Analysis Report Generator

- Sales analysis holds a complete history of invoice and goods return details for the period to date with full information.
- Flexible sales/purchases analysis reporting in detail or summary in any combination of customer, vendor, salesmen, area code, item code, brand, category, quantity, sales/purchases amount, cost, profit and product group for any date, week, month or year. User can also rank by key field or present in graphically chart and convert to Word & Excel.



銷售發票

- 可將多於一張報價單或銷售訂單的資料複製至送貨單或發票內，完成後系統同時更新各存倉之產品數量。
- 提供客戶產品編號及印於發票上。
- 發票資料可複製至包裝單上列印。
- 當客戶超出信貸限額或存貨不足時，系統便發出警告。
- 提供即時或核準發票過賬方式的選擇。
- 交易過程中，用戶可即時查看最新的報價資料、銷售歷史、各倉庫的數量、訂單及已預留數量的資料。
- 送貨單/發票可提供多個送貨地址及聯絡人以供選擇列印。
- 自動組合所有同區之送貨單，方便運輸送貨。
- 系統可自動根據預先設定的價目表(不同客戶產品、數量予不同價格及折扣)，選取合適的價格，並可在輸入過程中修改。
- 用戶可選用任何一種貨幣進行交易，並且根據不同幣值及數量作出自動價格更改。
- 提供三層產品累積折扣及整張發票折扣功能，並同時可處理五項附加費用。
- 處理營業員的最新銷售狀況，方便計算佣金。
- 多層次式搜索銷售查詢功能，讓用戶可以更清楚地查看所有發票欠數、發票細節、收款細節、訂單欠數、貨運船期、報價資料及其他資料。

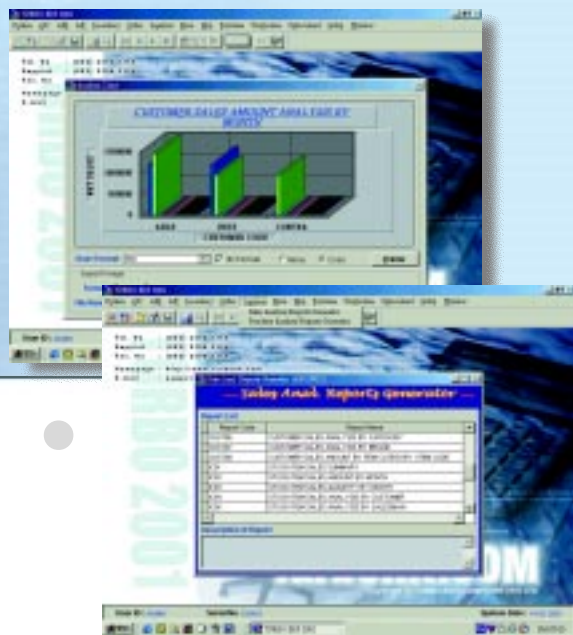
購貨訂單及產品收貨

- 提供外貿訂單貨品自動產生購貨訂單功能。
- 並把同一供應商的貨品自動地綜合成一張購貨訂單。
- 可將多於一張購貨訂單的資料複製至收貨單或供應商發票內，完成後系統同時更新各倉庫之產品數量。

- 提供供應商產品編號及列印於購貨訂單上。
- 交易過程中，用戶可即時查看最新的購貨記錄、各倉庫的數量及已訂購的數量。
- 系統可自動根據預先設定的價目表(不同供應商產品、數量予不同價格及折扣)，選取合適的價格，並可在輸入過程中修改。
- 用戶可選用任何一種貨幣進行交易，並且根據不同幣值及數量作出自動價格更改。
- 提供三層產品累積折扣及整張訂單折扣功能，並同時可處理五項附加費用。
- 並可於每種產品附上貨運船期表以作參考。
- 多層次式搜索購貨查詢功能，讓用戶更清楚地查閱外貿訂單與購貨訂單之追蹤、訂單欠數、貨運船期及其他資料。

銷售及購貨分析報表產生器

- 系統儲存所有發票及退貨的資料，以作銷售分析用途。
- 用戶可依據所需要的分析層次，如客戶、供應商、營業員、銷售地區、產品編號、品牌、種類、數量、營業額/購貨額、成本、毛利及產品組別自由組合，並選擇以日期、星期、月份或年份作分析歸類，系統可自動選出最高排列的資料，並可選以圖表描述或轉換至Word及Excel格式中。



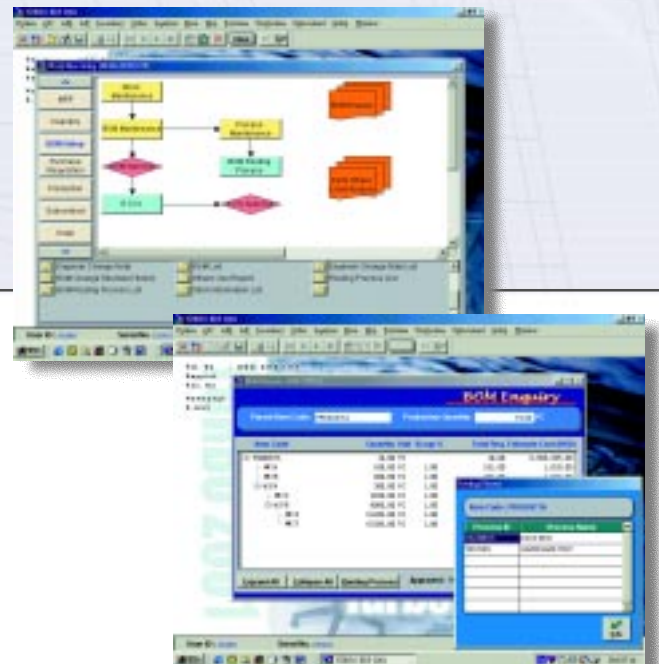
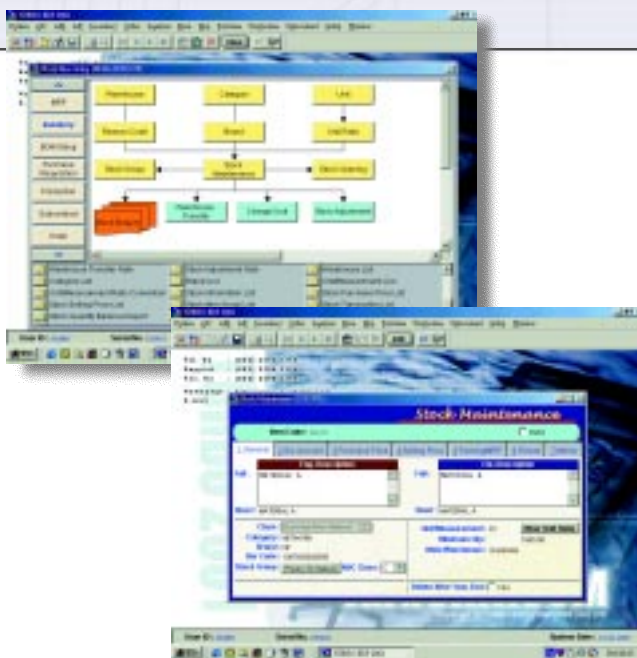
Inventory Control

- Maintain stocks of raw material, assembly items, finished goods, kit items and service items.
- Keep stock in one or more warehouses, and transfer stock between warehouses.
- Each stock item can be kept in different unit and convert into another unit.
- Item code can be set up to 18 characters long and unlimited lines of description.
- Category, brand, bar code, lot number, photos, ABC class and packing/weight information can be set up in each stock item.
- Color & size functions can be integrated to garments, textiles and shoes manufacturers and distributions.
- Define multiple substitute items, 3 preferred vendors, purchase lead time, production lead time and daily production rate and other information for each stock item.
- Customer item code and vendor item code can assign to stock items optionally.
- Provides lot/serial number tracking to streamline entry during inventory transactions.
- Automatic ABC classification by stock usage or cost value.
- Provides purchases/sales multiple price level. Multiple price and discount lists can be set up by currencies, quantities, units and customers/vendors.
- Tracking of IQC, materials and finished goods reserved.
- Value stock by weighted average, FIFO and lot costing.
- Handles full stock-take and cycle count, print stock-take cards, produce variance reports, and update stock records automatically if required.
- Multilevel drill down stock enquiry, which allows you to see all on hand, order detail, reserved, available quantity, selling price, purchase price and other information.

Bill Of Materials (BOM)

- Maintain Customer Order BOM, Engineering BOM, Work Order BOM, Production BOM and Kit BOM.
- Specify up-to 99 levels of sub-assembly, each incorporating and unlimited number of raw materials and sub-assemblies.
- User-defined scrap% for materials lost in production.
- Automatically substitute on stock item for another.
- Provides copy BOM and routing functions
- Maintain Engineer Change Note (ECN) triggered through effective dates & product change history.
- The 'Routing Process Code' defines the area where manufacturing activities are performed and the manufacturing process itself.
- Calculation of estimate cost for each assembly product.
- Indented and single level components of a configured product and estimate cost can be view in the BOM enquiry.
- Multi-level parts where used enquiry and reports.

<<



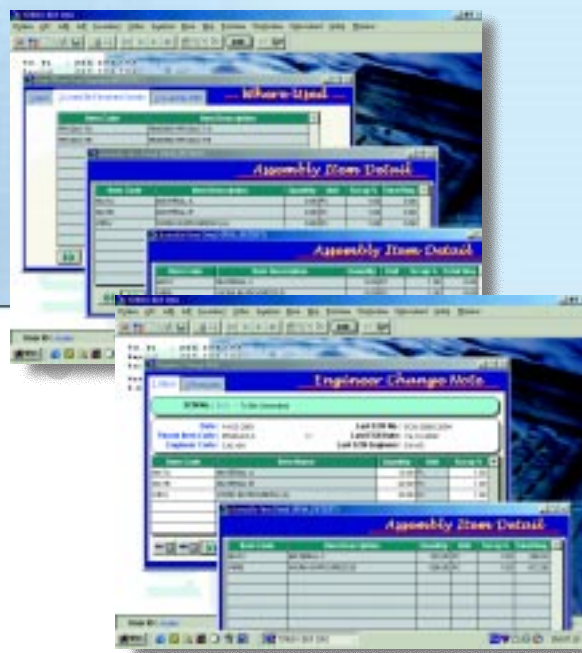
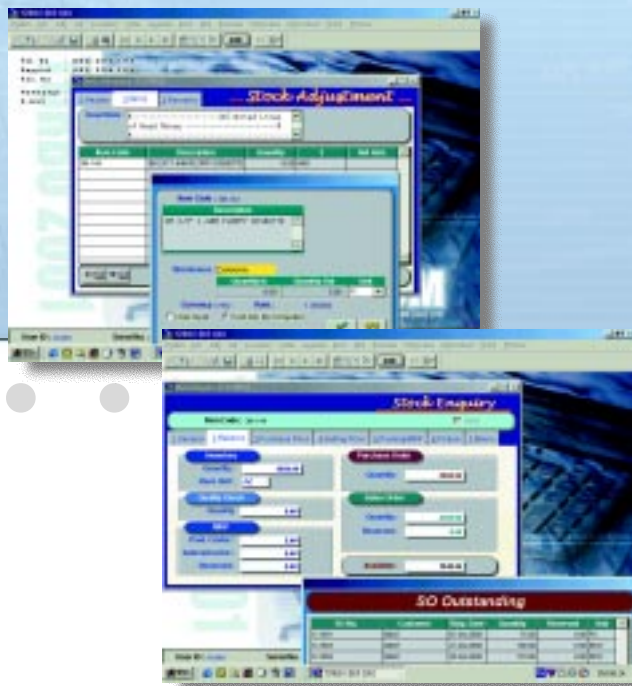
● 製 造 業

存貨管理

- 可監察原材料、半製成品、製成品、及配套元件的存倉資料，並可處理非實貨之交易。
- 存貨可儲存在不同的倉庫及可處理倉庫與倉庫間之轉移。
- 存貨可儲存不同單位數量，並可轉化至另一單位儲存。
- 存貨產品編號由十八個字元組成及可輸入無限行數的摘要。
- 可設定每一產品的類型、品牌、條碼、批號、圖片、ABC級別及裝箱/重量資料等。
- 顏色及尺碼之設定可適合於製衣、紡織及鞋業廠商及分銷商。
- 可設定多種代用貨品、三個優先供應商、申購所需日數、生產所需日數、每日生產量及其他的資料。
- 用戶可加入客戶及供應商的產品編號。
- 提供批號/產品序號管理，並以簡化程序輸入有關之資料。
- 可根據存貨的使用量或價值作出ABC等級。
- 產品買賣價格設定，可因應不同客戶/供應商、貨幣及數量以定立單價及折扣率資料。
- 可處理產品檢定(IQC)，並提供原材料及製成品預留存貨功能。
- 提供平均成本、先入先出及指定批號成本之會計計算方法。
- 提供處理存貨盤點及週期性盤點功能，並可列印盤點咭、存貨量變異報表及自動更新存貨記錄。
- 多層次式搜索存貨查詢功能，讓用戶可以更清楚查看所有現有存貨、訂單資料、已預留的存貨、可售買的数量、買賣價格及其他資料。

物料清單管理

- 物料結構可視乎生產計劃、用料計劃及實際生產之需求，分為工程、製造、客戶、工作單及散件組合之物料清單。
- 提供99層物料結構之設定。
- 每一原料另可設定生產過程中的損耗率。
- 並可設定多種代用品記錄。
- 生產工序可預先設定於物料結構中，並提供複製功能，減少人手輸入的時間。
- 提供工程更改單管理及生效日期，並有詳細歷史記錄，使用戶易於追蹤。
- 在生產過程中，用戶可記錄每個工序的半製成品數量。
- 計算每一產品之預計生產成本。
- 多層次式搜索物料結構查詢功能，讓用戶可以更清楚地查看產品所需的原料、損耗量、代用品及成本等。
- 並提供產品原料使用追蹤查詢功能。

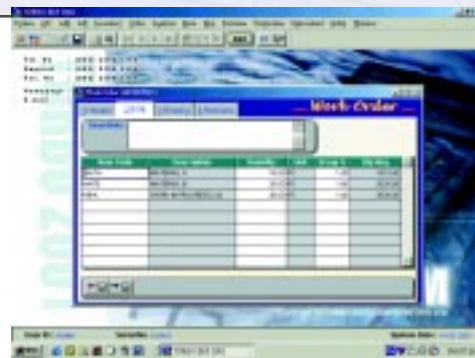
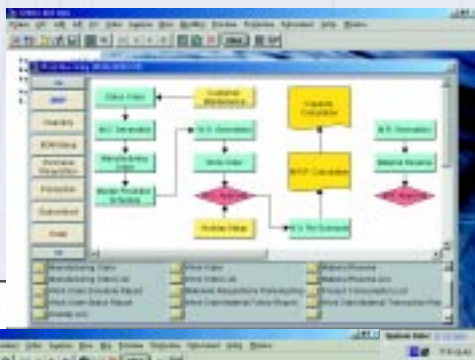


Master Production Schedule (MPS) & Material Requirements Planning (MRP)

- Manufacturing Order can be created from "make-to-order" or "make-to-stock".
- MPS can be generated a plan showing end-item production requirements which will satisfy customer demands.
- The system can be created a MPS and continually updates it to respond to day-to-day changes in demand and available resources.
- Work Order can be created manually or generated from manufacturing order.
- Automatically created hierarchical(parent-child) work orders.
- "Routing Process Code" and work center can be defined in work orders.
- Amend the BOM on a work order, add or subtract components.
- Component availability check and ability to substitute items.
- Arranges work orders production date and calculate production capacities.
- MRP can be produced a supply plan for components and work order plan for semi-products which would satisfy production requirements.
- MRP can be created purchase orders, work orders or re-schedule planning recommendations based on current work orders, subcontract orders, manufacturing orders, inventory, purchase requisition and need date information.

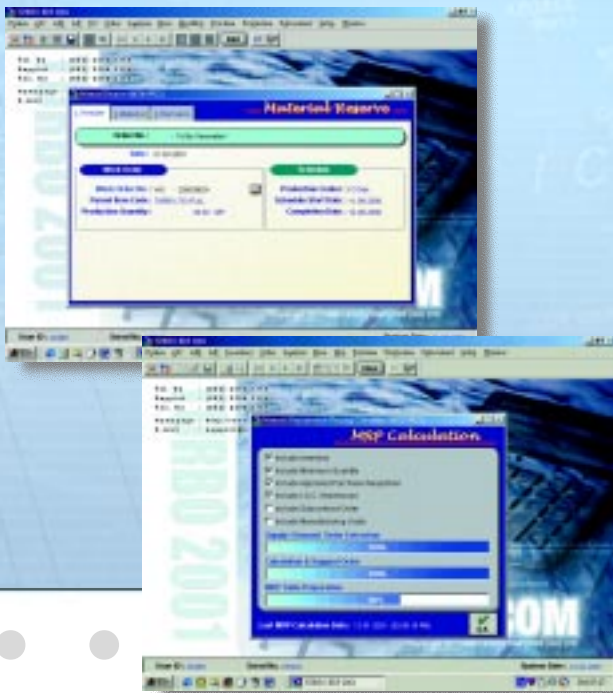
Capacity Requirements Planning (CRP)

- CRP can be told management to reschedule existing and planned work orders or make adjustments to available resources in order to meet production commitments.
- Individual work center calendar for variable capacity constrains.
- Machine and labor capacities by work center and machine.
- Evaluates capacity requirements based on outputs from MPS & MRP.
- Streamlined scheduling and reporting in high-volume repetitive environments.
- Graphical planning board screen for work center and work orders scheduling.
- Bar chart display showing underload and overload situations for each work center.
- Pegs capacity loading to planned & actual orders.



主生產排程及物料需求計劃

- 生產單可分為"訂單生產"及"庫存生產"類別。
- 主生產排程表可列出各產品時段的需求。
- 系統並不斷地更新資料以反映每日產品需求及現有資源的變化。
- 可自設工作單或從製造單中複製。
- 系統並自動產生製成品對下的半製成品所需的工作單。
- 生產工序及生產中心可預設於工作單中。
- 工作單中的物料清單可自由增減。
- 並可設定代用品於物料結構清單中。
- 安排工作單之生產日期及計算所需的生產能力。
- 系統可自動產生一份完整的物料需求計劃及半製成品所需的工作單之報表。
- 物料需求計劃可依據現有的工作單、外發加工單、製造單、存貨、原料申購及所需日期，而編排出一份計劃購貨訂單、計劃工作單及調整生產日期之報表。



產能規劃方案

- 產能規劃方案能從現有資源中計算，可即時通知管理層需重新編排已定的工作單計劃，從而達到可準時完成訂單的目的。
- 可獨立編排工作日曆於生產中心上。
- 並可設定每一生產中心的機器及人力資源。
- 根據主生產排程及物料需求計劃所得的數據來評估產能需求。
- 有效率的編排分析報告，代替每日重覆的計算編排。
- 以圖像顯視方式，分析各生產中心及工作單的編排計劃。
- 並以直線圖表分析各生產中心的未用及超出負荷的情況。
- 提供需求追蹤，以便制定建議訂單。



>>

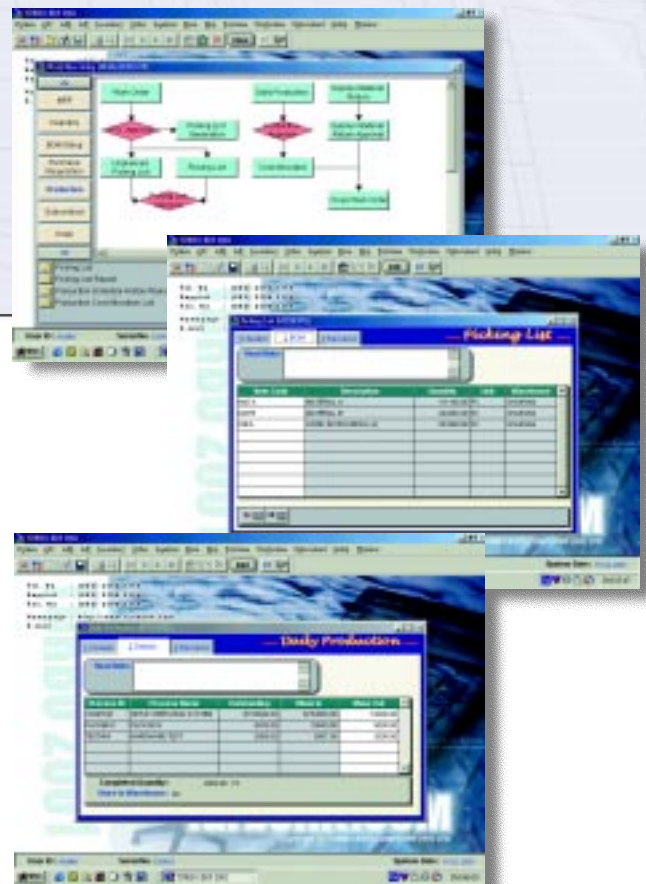
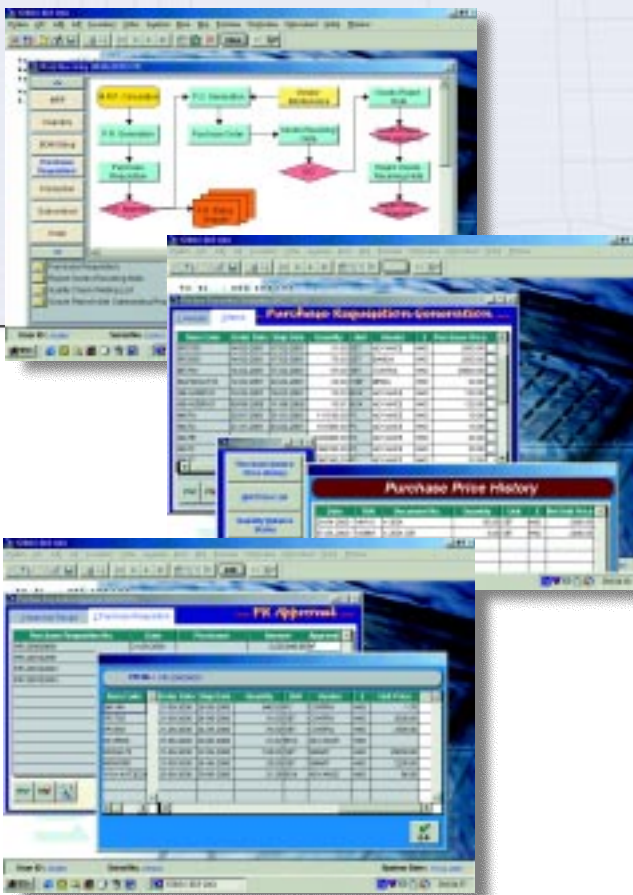
Purchase Requisition (PR)

- Purchase requisition planning can be generated from MRP or manual input by requestor.
- Purchase requisition enables multiple items entry. Default information, such as vendor, need date, item code, unit price and quantity ...etc. and combine multiple line items to one line item for EOQ.
- On-line preview function provided for viewing updated order history, on hand quantity of individual warehouse and purchase order quantity.
- Vendor quotation entry and history enquiry.
- Approvers can modify, approve, or cancel entire requisitions or individual stock items.
- To reduce data entry, purchase orders are generated directly from approved requisitions.
- Group materials with same vendor into one purchase order automatically.
- Inspection-required flag on selected items.
- Provides goods receiving, income quality Check(IQC) and materials reject or replacement.
- Complete history of test results.
- On the purchase requisition enquiry screen, you can drill down to see all purchase requisition to purchase order tracking, outstanding order, order shipment and other information.

Shop Floor Control (SFC) & Subcontract Order

- Picking List can be printed and components or substitute items issued or return from inventory.
- Shop floor control functions are used to track the production process including assembly, cleaning and packing ...etc.
- Manufacturing routing can split by a list of routing process code until the finished products are received into stock and the work order is closed.
- Enter (QA) and inspection detail of finished goods.
- Provides surplus return and scrap material usage.
- Post shop floor costs to work orders for analysis.
- Comparing planned costs to actual costs and providing the valuable management reports in managing your costing functions.
- Enquire into the status of WIP by work order showing completed and outstanding operations.
- Used in production planning to calculate manufacturing lead times and organize work center loads.
- Variance report between the planned and actual production quantity.
- Subcontract order, materials issued/return and finished goods receiving operation support.

<<



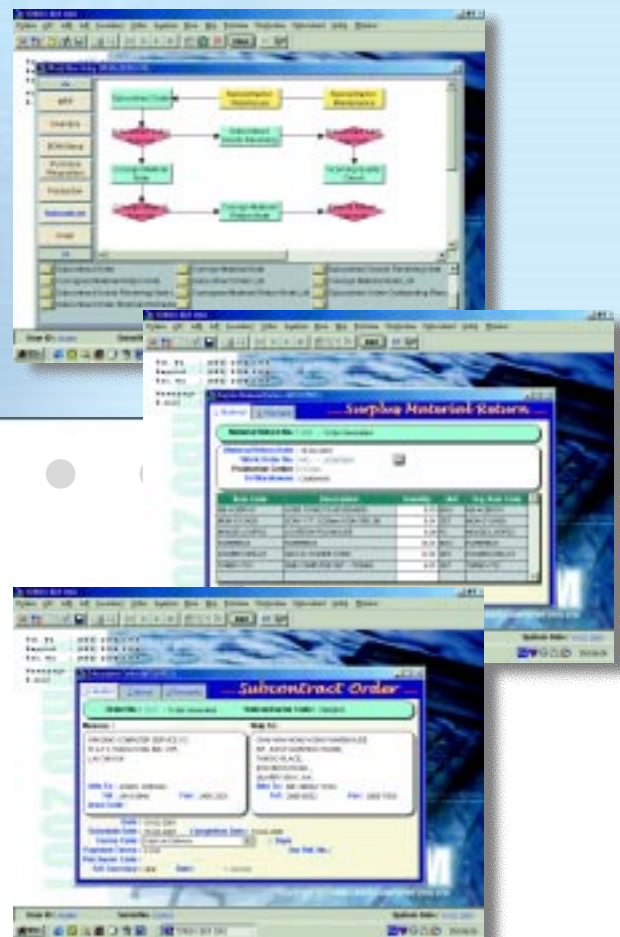
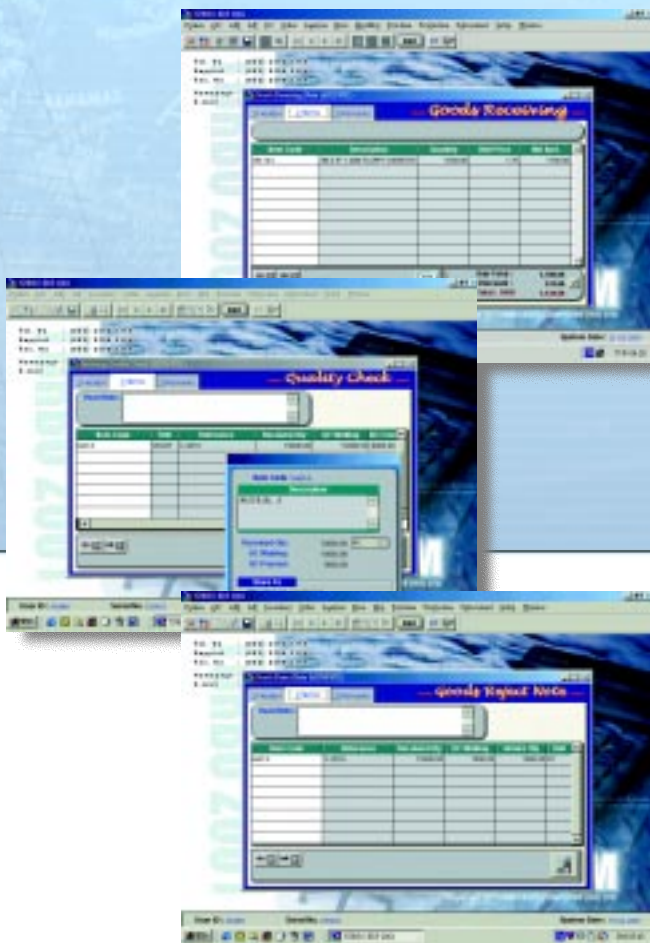
● 製 造 業

物料申購

- 用戶可根據實際需求輸入或由物料需求計劃計算的結果，產生一份物料申購單。
- 物料申購單中可處理多項資料，例如：供應商、所需日期、物料單價及數量等，並可將不同日期所需的相同物料，組合成一項最經濟的訂購數量訂單。
- 交易過程中，用戶可即時查閱最新訂單歷史、各倉庫的數量及購貨訂單數量的資料。
- 提供供應商之報價記錄及查詢功能。
- 批核申購之管理人員可隨時更改、刪除及批核部份之申購物料。
- 物料申購單核准後，系統即可產生購貨訂單。
- 並把同一供應商的物料自動綜合成一張購貨訂單。
- 可設定各類物料的品質檢定需求。
- 提供完整的收貨、品質檢定、物料退回及更換的程序。
- 提供詳細的物料測試報告記錄。
- 多層次式搜索物料申購查詢功能，讓用戶更清楚地查閱申購單與購貨訂單之追蹤、訂單欠數、貨運船期及其他資料。

生產中心管理及外發加工

- 提供發料單上之發料管理及代用品的替代。
- 生產中心管理可處理每個生產工序的記錄，如裝配、清潔及包裝等。
- 每個生產工序都以"生產編號"記錄已完成的數量，直至生產完成存於倉庫內及工作單完成止。
- 輸入製成品的品質檢定結果及細節。
- 提供退料及原料損耗記錄。
- 並把生產中的成本附加於工作單上以作分析。
- 分析報表分別顯視預算及實際支出成本的比較。
- 提供每一工作單中的半成品數量狀況。
- 根據生產計劃以計算生產所需時間和編排生產中心之負荷。
- 提供計劃及實際生產數量差異報表。
- 提供外發加工、發料/退料及完成品收貨等管理。



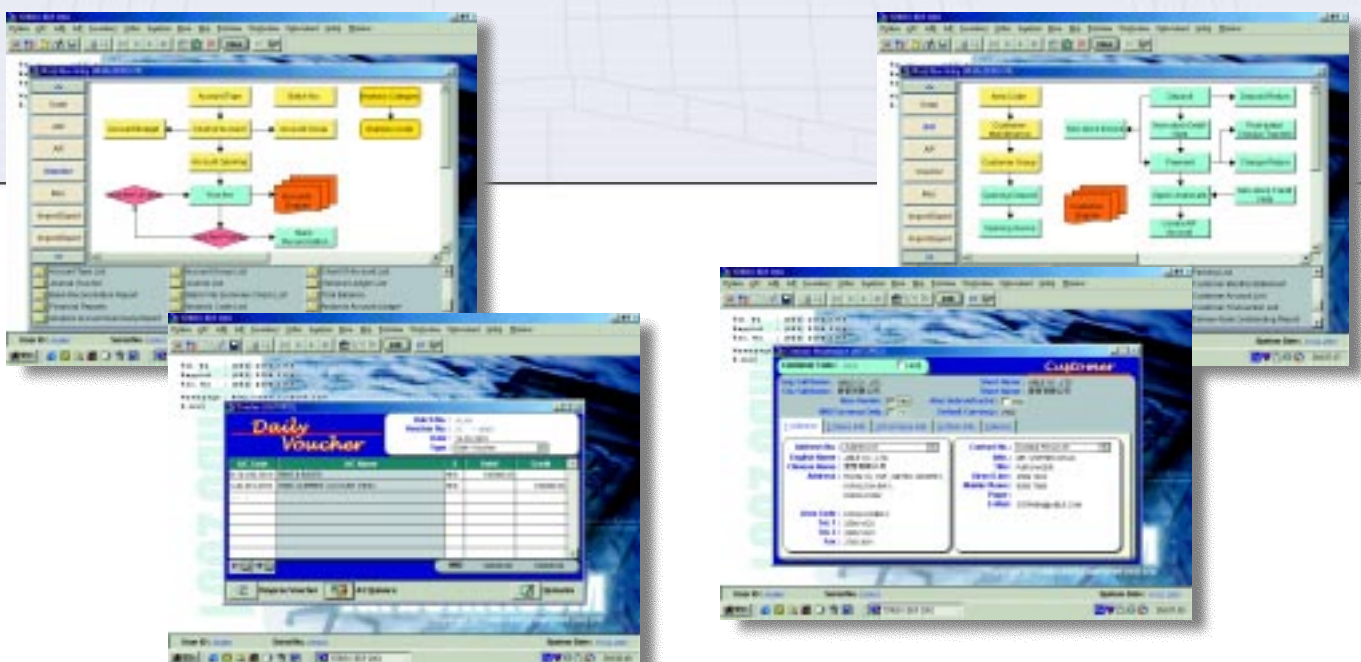
General Ledger

- Data is automatically imported from related invoices, payments and stock transactions.
- Handle up to 99 years of transactions without doing year-end.
- Support 99 accounting periods per fiscal year with user-defined period start date and end date.
- Account codes can be set up to 10 characters long and the structure is user defined up to 5 levels and handles multiple currencies per account.
- Option 5 levels analysis code can be modified and expanded and supports multi-divisions, departments and jobs costing.
- Convenient budgeting for profit & loss accounts.
- Standard and audit adjustment journals can be created.
- Recurring and reversing journals can be created automatically.
- Provides real-time and batch posting method.
- Provide un-post function for amendment.
- All financial reports can be previewed before doing posting function.
- Option flexible report generator enables you to define financial statement which may contain actual, budgeted, last year, last month or analysis figures.
- Departments & companies consolidation.
- Bank reconciliation function is provided.
- Multilevel drill down account enquiry, which allows you to see all ledgers, current balance, voucher detail and other information.

Accounts Receivable/Payable

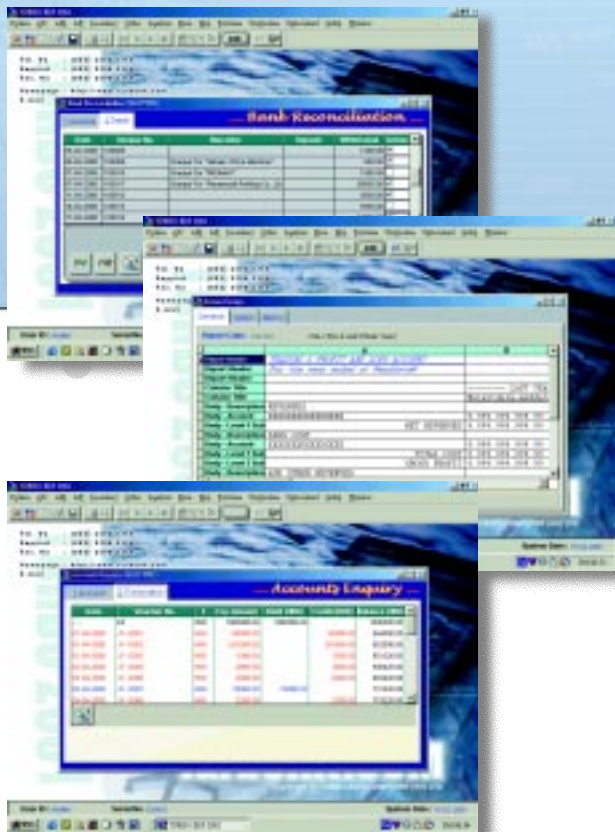
- Customer/Vendor code can be set up to 10 characters long and handles multiple currencies per customer/vendor.
- Multiple billing/delivery addresses and contact persons can be entered.
- Warning displayed in invoice entry for customer accounts exceeding the permitted credit limits.
- Deposit payment, postdate cheque & cheque return, debit/credit notes can be handled.
- Handles settlement discount for early payment of invoices.
- The multiple allocation method is provided for the settlement among invoices, debit/credit notes and deposits.
- Provides contra functions between accounts receivable & accounts payable systems.
- Automatic created voucher into general ledger module.
- Invoices and payments in multiple currencies and gain/loss on exchange rates calculated and posted automatically.
- Outstanding invoice analysis by invoice date or due date or month and the balance cut off at any date.
- Flexible aging periods are user defined. For instance, aging could be 30-60-90 or 7-14-21.
- Statement layouts can be selected from brought forward or outstanding invoices.
- Multilevel drill down customer/vendor enquiry, which allows you to see all outstanding invoices, invoice detail, payment detail, outstanding order, order shipment, quotation history and other information.

<<



總賬系統

- 傳票資料可自動從有關之發票、貨款交收及存貨交易中自動產生。
- 可處理99年之交易紀錄，而毋須年結。
- 每一會計年度最高可分為99個週期，而用戶更可自由設定每一週期的起始日及結算日。
- 會計賬戶編號可達十個字元，並且可分割至五個層次的組合及處理多種貨幣的功能。
- 另外可加入多至五個層次的分析編號，以支援多部門及工程成本等會計項目。
- 損益合併表中可預設財政預算金額以作比較。
- 可獨立輸入核數後的修改傳票，以識別日常輸入之傳票記錄。
- 定期或多次使用之傳票，可預先設定及提供對沖傳票的功能。
- 提供即時或核準傳票過賬方式的選擇。
- 提供反過賬功能，以便修改錯誤。
- 所有財務報表資料可包括未過賬或已過賬的傳票選擇。
- 附設強大的財務報表產生器，用戶可自由組合財務報表所列印的內容，例如現時及預算的金額、上年及上月的數據等分析。
- 可合併多間公司或部門資料列印。
- 附設銀行月結單對數及調整表功能。
- 多層次搜索會計賬目查詢功能，讓用戶可以更清楚地查看所有賬目、現有結餘、傳票細節及其他資料。



應收賬、應付賬

- 客戶/供應商編號最多可由十個字元組成，更可記錄多種貨幣之交易記錄。
- 客戶/供應商可儲存多個地址及聯絡人資料。
- 當客戶超出信貸限額時，系統便發出警告。
- 可處理訂金、期票及退票、借項及貸項通知單功能。
- 設有提早收款折扣功能。
- 各種交易可互相對沖金額。
- 應收賬與應付賬可互相沖消功能。
- 交易更新後，系統自動產生傳票及過賬至總賬系統中。
- 在處理發票及收款過程中，可將外幣的匯率計算差價過賬至總賬系統中。
- 發票欠數報表可依發票日期、到期日及截數日期以月份或日數形式列印。
- 用戶可自設賬齡分析報表之週期。例如：賬齡時期以30-60-90日或7-14-21日作分析。
- 客戶月結單可選擇淨欠數發票或承上結餘方式列印。
- 多層次搜索的客戶查詢功能，讓用戶可以更清楚地查看所有客戶/供應商的欠數發票、發票細節、收款細節、訂單欠數、貨運船期、報價記錄及其他資料。



Our Services

The **TURBO** ERP Software and the computer on which it runs will rapidly become the heart of your business. So, it is important to support both of them properly and our company will provide a full range of support service which include:

THE SERVICES

- On-site installation.
- Design implementation strategy and approach.
- One or more system consultants will be assigned to training & service.
- Provides custom programming services to extend your use of TURBO ERP software.
- Half a year hot-line warranty and remote support by modem.
- Provide free upgrade service for the same series version within warranty period.

我們對客戶的服務

當 貴公司選用本公司的快達系統 (Turbo ERP) 後，我們深信能成為 貴公司的最佳商業伙伴及顧問，隨時提供即時協助，以我們專業的技術及無微不至的服務，保障 閣下在操作過程中，得到絕對可靠的信賴。

我們對客戶的服務承諾：

- 專人上門安裝。
- 提供現場實地觀察，針對性地提供意見，減低系統引入時遇到的阻力。
- 每一客戶均有一位或多位系統工程師提供專業培訓及跟進。
- 跟據客戶的不同需求，在系統上作出修改。
- 半年免費保養、電話熱線詢問服務及經數據機作遙距支援。
- 在保養期內免費提供相同系列版本的升級服務。



Turbo Soft Computer (HK) Ltd.
快達電腦（香港）有限公司

Room 1402, Manulife Provident Funds Place,
345 Nathan Road, Jordan, Kln., Hong Kong.

香港九龍佐敦彌敦道345號宏利公積金大廈1402室

Tel電話: (Main營業部) (852) 2398 1166 (Services客戶服務部) (852) 2398 2264

Fax傳真號碼:(852) 2398 3364 Email電子郵件: sales@turboHK.com

www.turbohk.com

All Prices and Program Specifications are subject to change without prior notice.
This document is for information purpose only.

*所有價格及程式之修改，將不作另行通知。這份文件只屬資料性參考。